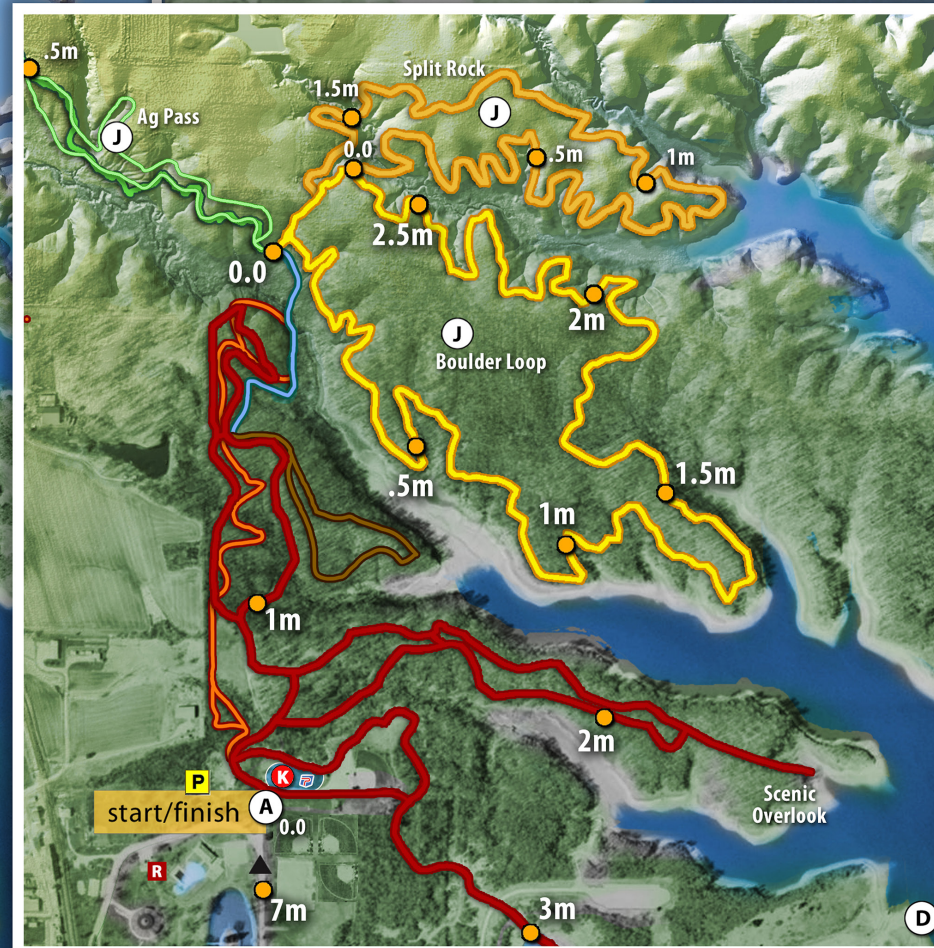


- General Dacey Trail 7m (Rock Chipped)
- Bike Route
- Boulder Loop 2.5m (Dirt Trail)
- Split Rock Loop 1.7m (Dirt Trail)
- Ag Pass 0.9m (Dirt Trail)
- Dove Crossing 0.8m (Dirt Trail)
- Ramsey Ridge 0.3m
- Eagle Point .5m (Dirt Trail)
- m = mile

- A** Trailhead/Parking | Start/Finish
- B** Forest Park
- C** Trailhead/Parking
- D** 9th Street Boat Ramp
- E** Lake Shelbyville 9th St. Beach
- F** Dam West Trailhead Overlook and Fitness Equipment
- G** Lake Shelbyville Visitor's Center
- H** Shelbyville Office of Tourism
- I** Downtown Shelbyville
- J** Mountain Bike/Hiking Trails
- K** Pump Track
- R** Restrooms
- P** Parking

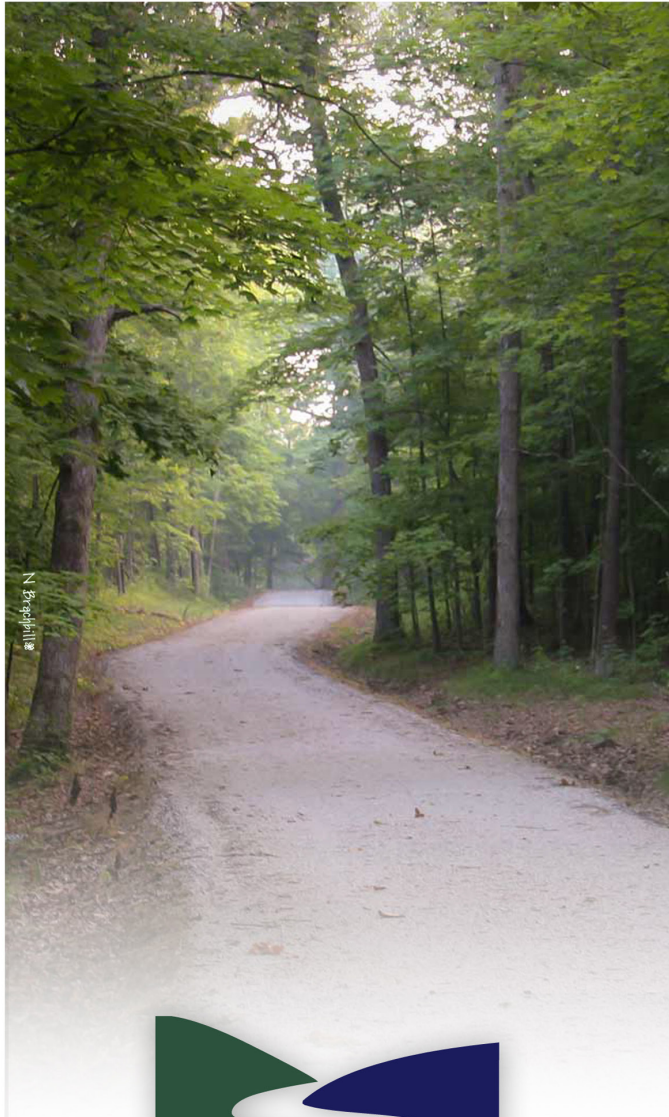


US Army Corps
of Engineers®



GENERAL DACEY TRAIL

GENERAL DACEY TRAIL



GENERAL DACEY TRAIL

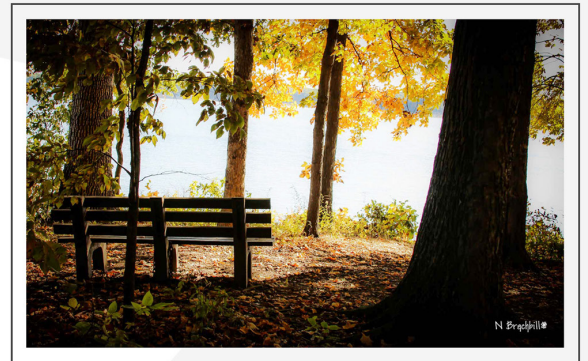
www.daceytrail.org

- (A) TRAILHEAD/PARKING**
Located in Forest Park. This is a good place to start on the Dacey Trail. A pavilion is available at this location—a great place for a picnic! The map on the reverse side shows the mileage starting/stopping here.
- (B) FOREST PARK**
Enjoy the many activities the park provides—swimming at the Family Aquatic Center, let the kids run at the playground, fishing at the Lagoon, catch a baseball game, or jump in for a game of basketball or sand volleyball.
- (C) TRAILHEAD/PARKING**
From here you can begin on the trail, ride over to the beach area, or simply take a rest at “the point” as you enjoy the scenery of the lake.
- (D) 9TH STREET BOAT RAMP**
- (E) 9TH STREET BEACH**
Enjoy a day at the beach and bring along a picnic lunch (grills are also available). There is also a playground area as well as a sand volleyball court.
- (F) DAM WEST TRAILHEAD OVERLOOK AND FITNESS EQUIPMENT**
Stop here and enjoy a beautiful view of Lake Shelbyville, Fitness Equipment available here.
- (G) LAKE SHELBYVILLE VISITOR’S CENTER**
Find out more about Lake Shelbyville!
Open seasonally.
- (H) LAKE SHELBYVILLE OFFICE OF TOURISM**
Find out all you need to know about Lake Shelbyville and the surrounding area. Open year round. www.lakeshelbyville.com
- (I) DOWNTOWN SHELBYVILLE**
Unique gift items, restaurants, and our local Chamber of Commerce can be found here!
- (J) MOUNTAIN BIKE EXTENSION**
Enjoy over 6 miles of mountain biking/hiking trails! The location of this adventurous trail is just north of the existing General Dacey Trail.



Photo by Valerie Eversole

LAKE SHELBYVILLE covers 11,000 acres of surface waters with 172 miles of shoreline and approximately 23,000 acres of surrounding public lands that are dedicated as state parks, Federal public recreation areas, fish and wildlife management areas. Lake Shelbyville is the outdoor recreation hub of Central Illinois with over 4.0 million visitors a year. This significant tourist destination is the centerpiece of the General Dacey Trail network.



THE GENERAL DACEY TRAIL is a multi-use, recreational trail—accessed mainly by walkers, runners and bikers. As you move along the pathways of the Dacey Trail, you will find nature at its best—with many scenic views of Lake Shelbyville. A detailed map is provided with points of interest along the way. We hope you enjoy the experience and come back again!